



PERFECT A SMILE®
PONTIC PAINT*

“Finally! A Solution for Temporary Restorations.”

- **Eliminate Flippers** (Aesthetic Treatment Alternative)
- **Easy and Economical Temporary Pontics**
- **Same Day Fix** (Vacuum Form A Tray - Paint A Restoration)



Quick & Easy

- Eliminates and replaces flippers
- Aesthetic temporary restorations
- Congenital or trauma aesthetic replacements
- Grafting/implant integration spacing
- Pre-Pontic / peg lateral relief
- Space maintenance

Economical & Efficient

- Same day turnaround (in-house fabrication)
- No emergency schedule disruption
- No doctor chairtime (staff delegated)
- No lab costs or delays
- No Pontic sizing or inventories
- High elasticity modulus (will not crack or splinter)

Only from  **RELIANCE®**

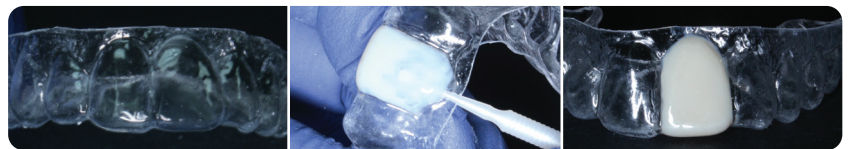


Patient A.M. - PAS Shade: Bleach



Patient B.B. - PAS Shade: A2

Effective with Vacuum Form Trays or Aligners



* Manufactured under U.S. Patent Number #8864493 B2



BOND ALIGNER®
LIGHT CURE ALIGNER ADHESIVE

Bonds Hooks & Buttons to Clear Aligners

Light Cure Aligner Adhesive

1.4g Bond Aligner® Syringe With 5 Tips #BA



- The only adhesive specifically designed to bond attachments (both preformed and mini mold attachments) to clear aligners.
- Bond Aligner exclusively has the same modulus of elasticity as clear aligner plastic, thereby ensuring the maximum flexibility & therefore bonding permanence.
- Securely bonds any attachment to clear aligners and attachments.
- Bond Aligner becomes transparent after light-curing for excellent aesthetics.
- No etching or any other type of tray or clear aligner preparation is necessary. Bond Aligner can be used directly.
- The Bond Aligner syringe comes with helpful needle tips for a precise delivery.



RELIANCE®
ORTHODONTIC
PRODUCTS

Contact your local
Reliance distributor
in your own country.

The full distributor list can be found at
RelianceOrthodontics.com/Distributor-List

Proud Sponsor of
AAOF



PERFECT A SMILE®
PONTIC PAINT

Simple Fabrication Steps

1. Form a tooth and add to the edentulous space on a patient model

- Hand shape and form (FIG 1 and 2)
- Pontic Putty is a perfect adaptable paste (SEE BELOW)
- Position on a model (FIG 3)
- Light cure (FIG 4)

2. Vacuform a plastic tray (1mm plastic recommended)

- Use only clear thermoform plastic (FIG 5)
- Clear plastic tray (FIG 6)
- Aligner trays are compatible

3. Match paint to patient tooth shade

- 10 PAS shades – VITA shade guide matches
- PAS shades may be mixed to create exact matches

4. Paint the tray socket to create a temporary crown

- 3 coats are normal (FIG 7)
- Light cure each coat before applying the next (FIG 8)

5. Deliver the tray and watch the patient smile!

Order Info

Vita Shade Guide References

Most Popular Shades: A2, B1, D3 & C4

4g Jar PP/Bleach	#PPBL
4g Jar PP/A1 Shade	#PPA1
4g Jar PP/A2 Shade	#PPA2
4g Jar PP/A3.5 Shade	#PPA35
4g Jar PP/B1 Shade	#PPB1
4g Jar PP/C1 Shade	#PPC1
4g Jar PP/C4 Shade	#PPC4
4g Jar PP/D3 Shade	#PPD3
4g Jar PP/Light Shade	#PASL
4g Jar PP/Medium Shade	#PASM
Super Fine Micro Brushes (100)	#MBSF

Applicators & Spatula Purchased Separately: #PASACC



Easy. Fast. Economical.

One Day Replacements

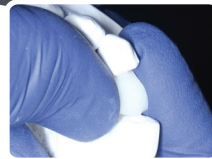


FIG 1 Form and Shape

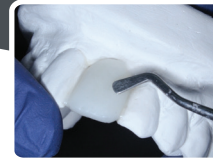


FIG 2 Form and Shape

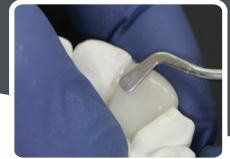


FIG 3 Position

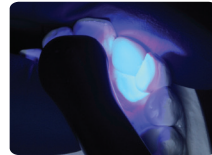


FIG 4 Cure

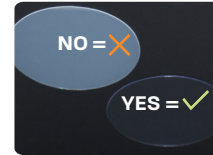


FIG 5 Clear Plastic - Recommended

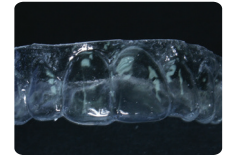


FIG 6 Clear Plastic Tray



FIG 7 Apply

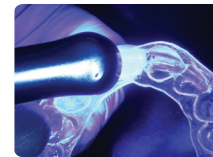


FIG 8 Cure



FIG 9 Finish

Repeat the Apply and Cure steps as necessary



PERFECT A SMILE®
PONTIC PUTTY

Fingertip Pontic Fabrication

- Light cure composite paste
- Putty-like consistency
- Facilitates tooth shape formation
- Eliminates pontics, wax and PVS
- Bonds tenaciously to stone/resin models
- Provides proper clear aligner anatomy

Clinical Applications

- Pontic formation by hand
- Bridges/fills gaps in model
- Facilitates proper aligner formation



Order Info

Light Cure Formable Paste

5g Paste In Syringe

#LBOPS

