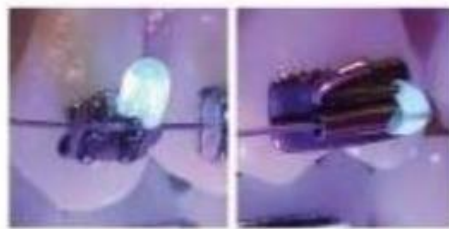


RELIAWAX[®]

- Wax-Like Protection in a Syringe
- Soft Tissue Protect
- Light-Cure Product



Item No.: RWX

RELIAWAX[®] 1.5g Syringe plus 10 needle tips

1. Why do we need a Soft Tissue Protector?

- 1.1. It is common for orthodontic patients to experience light but uncomfortable intraoral lesions, caused by bracket or buccal tube hooks or bracket tie wings rubbing against the soft tissue on the inside of the cheeks and lips. The appearance of lesions can be especially frequent after initial bracket bonding.
- 1.2. As well as lesions caused by brackets and buccal tubes, similar wounds can be caused by Temporary Anchorage Devices (TADs) also known as Mini Orthodontic Implants or Mini Orthodontic Screws.
- 1.3. Additionally, they can be caused by orthodontic wire ends when they escape from the buccal tubes and puncture the soft tissue.

Please find images below, which correspond to each of these three areas.

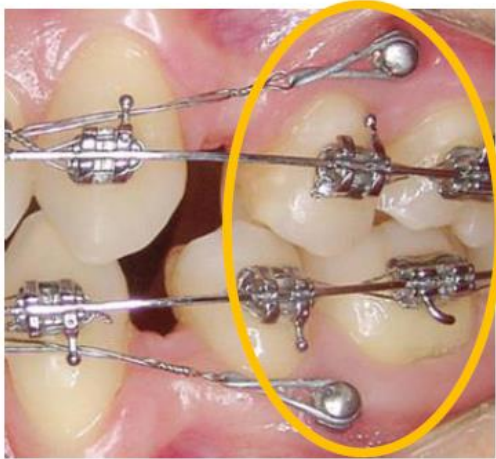
Fig. 1.1. Lesions caused by brackets



Lesions caused by friction with bracket hooks, buccal tube hooks and/or bracket tie-wings



Fig. 1.2. Lesions caused by heads of TADs, Mini-Implants, Mini-Screws.



Lesions caused by friction with the heads of:
Temporary Anchorage Devices (TADs),
Orthodontic Mini-Implants,
Orthodontic Mini-Screws.

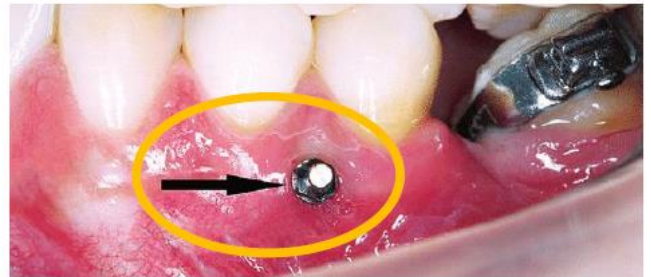


Fig. 1.3. Lesions caused by the ends of archwires



Lesions caused by the puncture of
soft tissue by the ends of archwires
when they slide too far or slip out of
the buccal tube



2. What products have been used for this problem so far?

Traditionally, patients have been given products such as patient wax, patient silicone or Gishy Goo to cover the hooks and tie-wings.

The patients used these products themselves at home. However, these products last only for a short time and usually disappeared when eating or cleaning teeth. Due to the only temporary effectiveness of these products, the lesions continue to appear frequently among orthodontic patients.



3. **RELIAWAX®**, Reliance®'s revolutionary new product is the solution.



RELIAWAX® offers us the perfect solution to give patients greater comfort and reduce emergency / extra appointments.

RELIAWAX® achieves this by offering a semi-permanent product, which is placed on the problematic areas and light-cured, leaving a soft and comfortable cushion between the:

- a. Bracket
- b. Buccal tube
- c. TDA
- d. Archwire end

and the soft tissue.

Once **RELIAWAX®** is no longer required, it can be easily peeled off in one piece.

RELIAWAX® fluoresces under an UV / Blacklight such as our own Ultra Violet Mini Light (item no. UVML)



RELIAWAX® being the light-cured, semi-permanent product, it remains in place for up to 6-8 weeks.

RELIAWAX® requires no special preparation, no etching nor priming/conditioning.

RELIAWAX® is transparent, and therefore offers an aesthetic solution as part of all orthodontic treatments.



✓ Crystal Clear – Perfect Viscosity



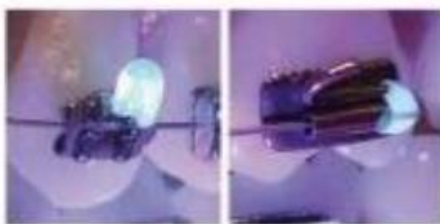
✓ Controlled Application



✓ Light Cure



✓ Semi-Permanent Clear Protection



✓ Fluoresces Under Black Light



✓ One Piece Removal

Summary

RELIAWAX® - Wax-Like Protection in a Syringe

RELIAWAX® is a reliable and revolutionary wax-like protection in a syringe that provides enduring comfort for your patients. The standard orthodontic patient wax may last a couple of hours or at most a couple of days, but **RELIAWAX®** is different! Apply **RELIAWAX®** in-office, light cure, and it will stay in place for 6-8 weeks.

- Outperforms traditional patient wax and silicone.
- Light cure gel in a syringe
- No etching, nor priming nor conditioning required.
- Semi-permanent - Remains in place from one appointment to the next
- Withstands routine brushing and eating
- Crystal clear and durable
- Soft and comfortable to the touch
- Fluoresces under black light / ultra-violet light.
- Contains one 1.5g syringe with 10 tips
- Can be used on:
 - Bracket Hooks and Tie wings
 - Buccal Tube Hooks
 - Orthodontic Temporary Anchorage Devices (TADs), Ortho Mini Implants / Mini Screws
 - Archwire ends
- Once **RELIAWAX®** is no longer required, it can be peeled off easily from the hook, TAD etc.
- Single piece removal

Please find the English IFU and SDS via the following link:

[RELIAWAX® Product Page](#)