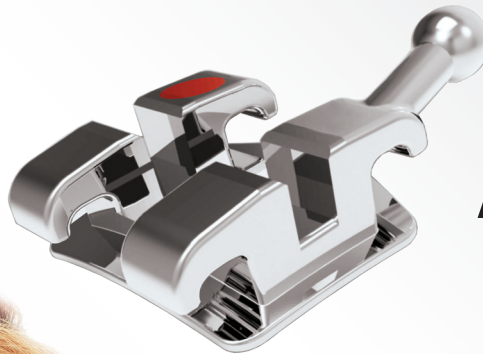


A truly exceptional bracket that is nearly perfect in all aspects.

Simply put, the Atlas™ Mini is a bracket you and your staff can rely on. The superior strength and tremendous durability of the Atlas™ Mini is due to the combined manufacturing of extremely strong stainless steel and the precise brazing technique to add an 80 gauge foil mesh pad. **The impressive features of Atlas™ include: 17-4 stainless steel, 80 gauge foil mesh pad, silky smooth slot and low profile design gives you the confidence to accomplish treatment in the most difficult malocclusions only dreamed of with other brackets.** This is the bracket that will make you, your staff and your patients smile brighter!



Atlas™ Mini
Bracket System



The **strongest**, most **durable**
mini-twin you can buy...

“ I've been **thoroughly impressed with the Atlas™ Mini bracket system.** One highlight has been a reduction in the amount of breakage due to the superior bond strength and durability of the Atlas™ Mini Bracket System. It pleases me to know that Dynaflex® has taken the time to address even the **intricate details** in regards to the manufacturing of their brackets. ”

Dr. Heather Brown, D.D.S. | Houston, Texas

 **DynaFlex®**

web: www.dynaflex.com ph: **800-489-4020**

082814 © 2014 DynaFlex®, St. Louis, MO 63074. Printed in U.S.A. All rights reserved. It is a violation of copyright law to reproduce all or part of this material, including photography, without the permission of DynaFlex®.